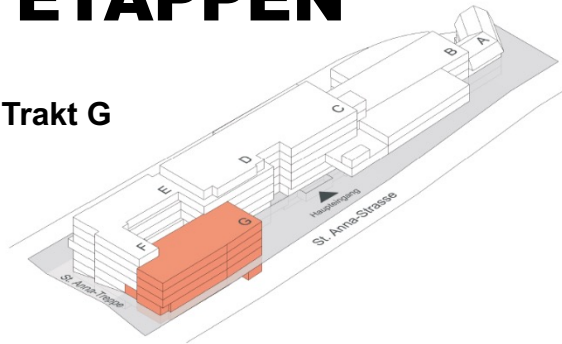


# INHALT

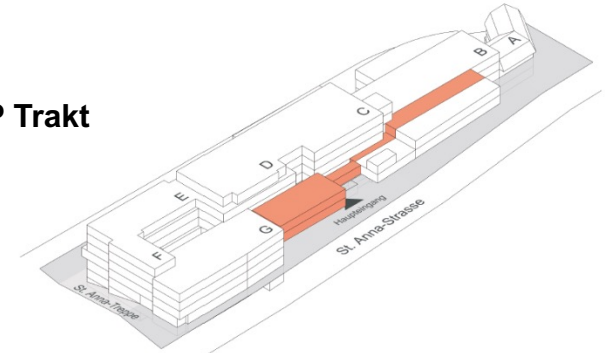
- Übersicht Gesamtprojekt
- Rückblick
- Ausblick
- Erweiterung Parkhaus
- Kommunikation

# BAU ETAPPEN

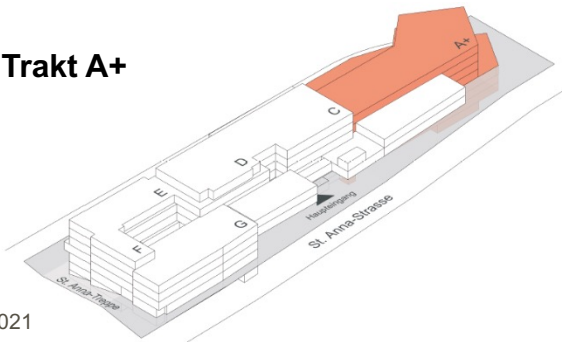
Etappe 1: Trakt G



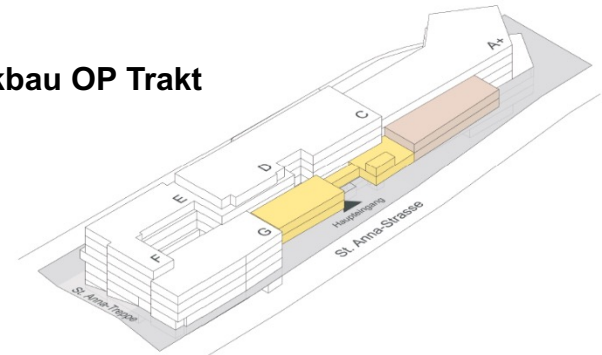
Etappe 2: OP Trakt

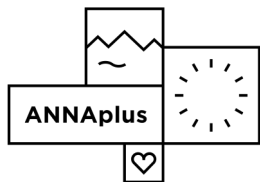


Etappe 3: Trakt A+

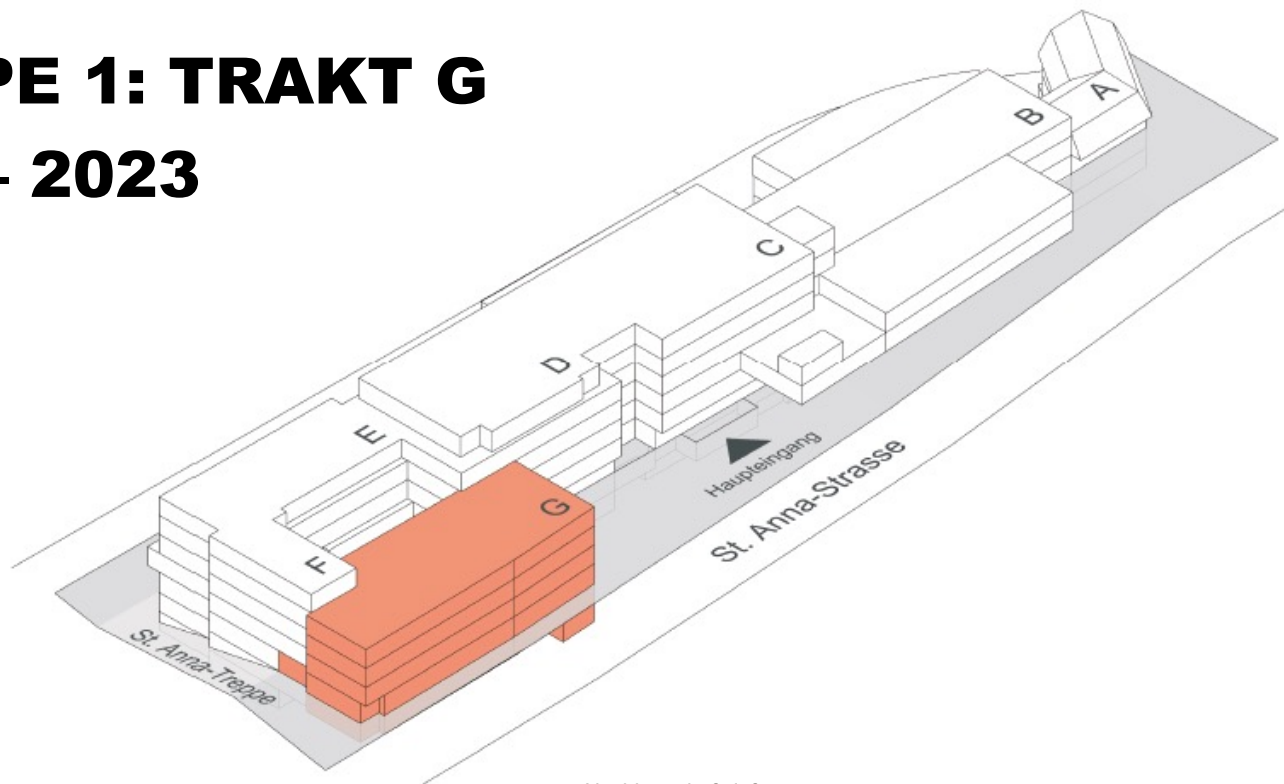


Etappe 4: Rückbau OP Trakt





# ETAPPE 1: TRAKT G 2021 – 2023

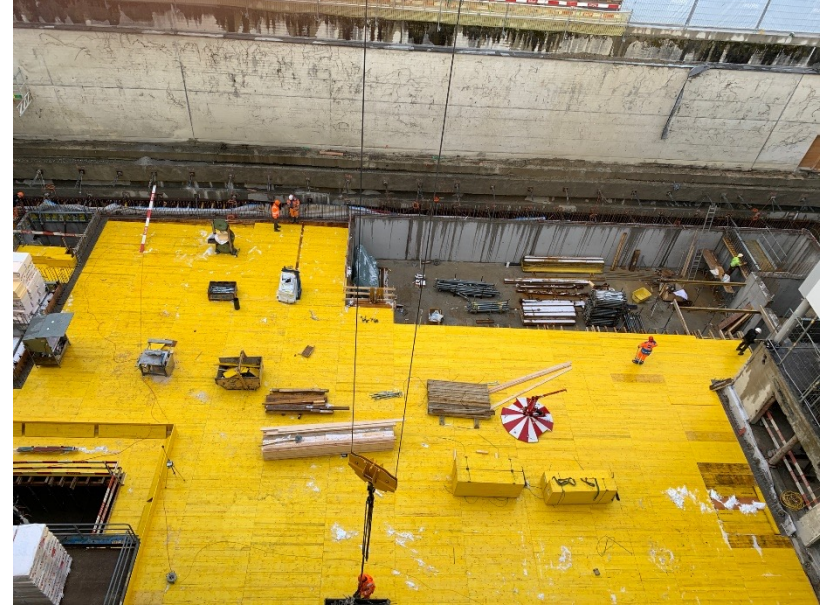


# RÜCKBLICK: BAUSTELLE

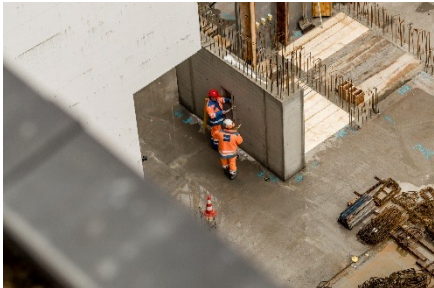


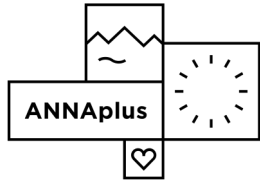


# RÜCKBLICK: BAUSTELLE



# RÜCKBLICK TRAKT G: GRUNDSTEINLEGUNG

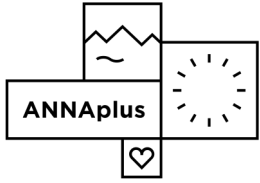




## **AUSBLICK TRAKT G: BAUSTELLE**

- Weihnachten 2021 2. UG ganz und 1. UG teilweise betoniert
- Mai 2022 Fertigstellung Rohbau
- Juni 2022 Gebäude dicht
- September 2023 Bauende Trakt G

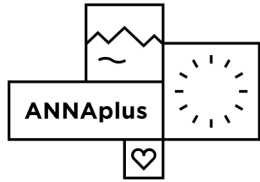




# AUSBLICK: VISUALISIERUNG TRAKT G







# KOMMUNIKATION

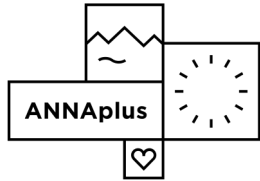
Generelle Informationen

[www.annaplus.ch](http://www.annaplus.ch)

Kontaktmöglichkeiten

Hotline: 041 208 42 42

E-Mail: [annaplus@hirslanden.ch](mailto:annaplus@hirslanden.ch)



# HERZLICHEN DANK

JONAS MEIER  
LEITER HOTELLERIE & INFRASTRUKTUR

KLINIK ST. ANNA  
ST. ANNA-STRASSE 32  
CH-6006 LUZERN